

Standard Product Specifications

**Pole Shaft:**

Fabricated from domestic ASTM A500 Grade C steel tubing, minimum yield strength 50,000 psi.

**Base Plate:**

ASTM A36 structural steel with 36,000 psi minimum yield. Two piece base cover and hardware included.

**Anchor Bolts:**

(4) Galvanized steel per ASTM F1554 Grade 55 with (2) nuts and (2) washers per bolt.

**Hand Hole:**

3x5 in.(4sq+4rd+) or 2x4 (3rd) reinforced opening 12 in. above base; includes cover and stainless-steel screws.

**Finish:**

Durable powder coat with phosphate pre-treatment for corrosion resistance. Optional primer undercoat available for extended protection.

**Warranty:**

2 Year Structural Warranty  
1-Year Limited Finish Warranty Standard;  
3-Year Optional Warranty  
(Extended warranty options apply to finish only).

**Grounding:**

Grounding hole provided inside hand hole.

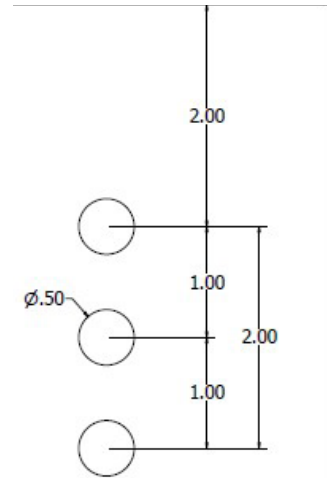
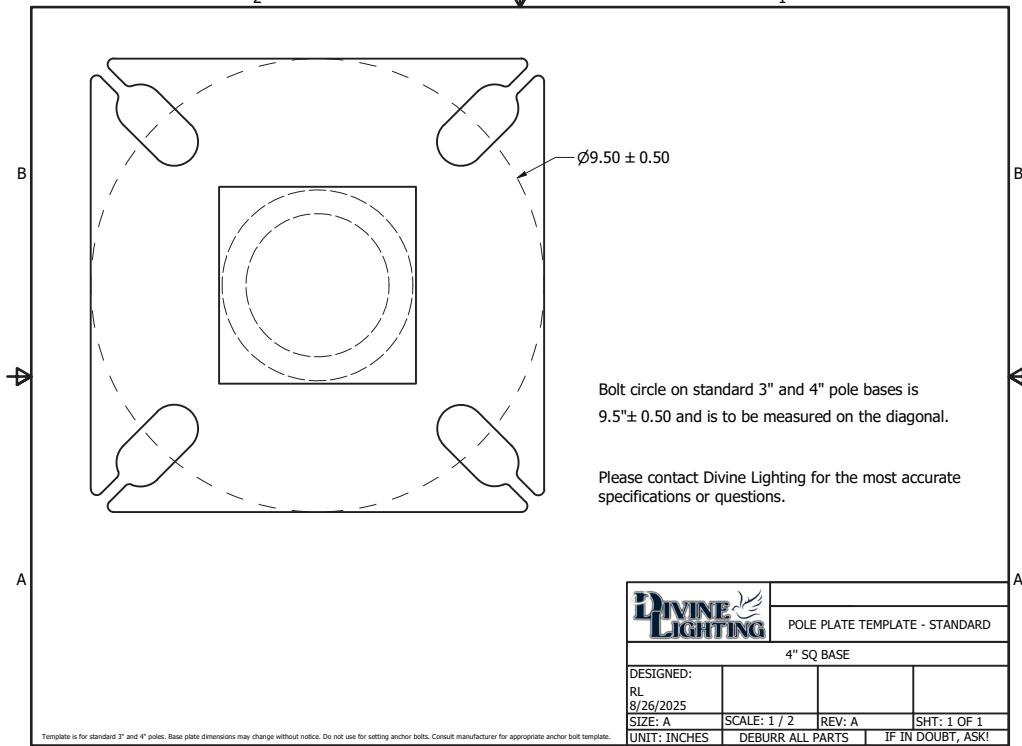


MODEL	SHAFT	SCHEDULE/GAUGE	HEIGHT	OPTIONS	PRIMER	FINISH
<b>Model</b> POLE-SSp (Round Steel Anchor Plate)	<b>Shaft</b> 4 - 4" OD	<b>Schedule/Gauge</b> 7 - 7 Gauge 11 - 11 Gauge	<b>Height</b> 12' 15' 20' 25'	<b>Options</b> 190 - (1) 90 Degree Hole 2180 - (2) 180 Degree Holes GFCI - GFCI Receptacle GFCILOCK - GFCI Lock TENON 2 3/8 x 3 EYE - Eye Hooks	<b>Primer(Optional)</b> P - Primer Coat (Recommended for Coastal Environments)	<b>Finish</b> DB - Dark Bronze BL - Black AS - Anodized Silver WH- White CC - Custom Color

\*\*Customer is responsible for providing fully dimensioned drill patterns when using heads from other manufacturers; otherwise, the standard Divine Lighting drill pattern will be used.

\*\*Customer must specify the orientation of fixtures on the pole when ordering. This information can be found in the options section, e.g. 190, 2180, etc.

\*\*Divine Lighting is not responsible for inconsistencies between poles, fixtures, and parts produced by different manufacturers, and cannot guarantee proper fitting between such components.



**Divine Standard Drill Pattern**

### EPA Chart 11ga.

Pole Height	90 MPH	100 MPH	110 MPH	120 MPH	130 MPH	140 MPH
12	17.81	14.43	11.92	10.02	8.54	7.36
15	14.25	11.54	9.54	8.02	5.81	4.56
20	9.89	8.01	6.25	5.25	4	2.75
25	7.44	5.25	3.2	2	.75	NA