



Round Steel Anchor Base Pole For Area & Site Lighting Applications

CONSTRUCTION

Pole Shaft:

Manufactured from A500 Grade B minimum structural steel: hot rolled, cold formed, and seam welded, conforming to ASTM A500 with a minimum yield strength of 46,000 psi.

Hand Hole:

3" x 5" Round reinforced hand hole located 12" above the pole base. Galvanized steel cover and stainless-steel screws provided.

Base:

Manufactured from A36 hot rolled construction grade steel plate, conforming to ASTM standards with a minimum yield strength of 36,000 psi. Base plate measures 3/4" x 9.5" square with hole patterns plasma cut in-house.

Anchor Bolts:

(4) Hot dip galvanized steel bolts conforming to ASTM F1554 Grade 55 requirements with a minimum yield strength of 55,000 psi are provided. Bolts are 3/4"-10 and 18" long for poles up to 25' or 30" long for poles greater than 25'. (2) washers and (2) nuts are provided per bolt.

Grounding Washer:

Grounding washer provided inside hand hole. Grounding bolt not provided.

Finishes:

All fixtures are phosphate pre-treated for corrosion resistance and superior bonding, then finished in a TGIC polyester weather resistant powder coated finish. All finishes are applied directly in-house in our state-of-the-art, purpose-built spray booths. Standard finishes are finely textured and available in Dark Bronze, Black, Anodized Silver, and White colors. Custom colors and finishes available upon request. Optional primer coat available for extended protection.

Covers:

Base covers are fabricated from 20-gauge galvanized steel and finished with a corrosion-resistant powder coat to provide a clean, seamless transition from base to pole.

INSTALLATION

Installation by qualified electrician.

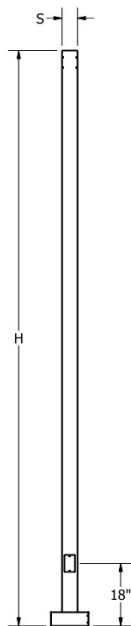
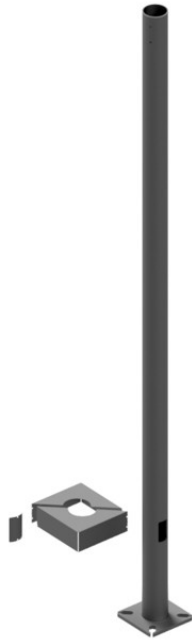
WARRANTY

Standard Warranty:

2-Year Limited Warranty covering defects in materials and workmanship.

Extended Warranty Options:

5-Year and 7-Year extended warranty programs available for increased long-term coverage (Finish Only).



EPA Chart 7ga.						
Pole Height	90 MPH	100 MPH	110 MPH	120 MPH	130 MPH	140 MPH
10	25.48	20.64	17.05	14.33	12.21	10.33
12	21.23	17.20	14.21	11.94	10.18	8.77
15	16.98	13.76	11.37	9.55	8.14	7.02
18	13.10	10.61	8.77	7.37	6.28	5.41
20	11.79	9.55	7.89	6.63	5.65	4.87
25	8.87	7.18	5.93	4.99	4.25	3.66

EPA Chart 11ga.						
Pole Height	90 MPH	100 MPH	110 MPH	120 MPH	130 MPH	140 MPH
10	17.71	14.35	11.86	9.96	8.49	7.32
12	14.76	11.96	9.88	8.30	7.08	6.10
15	11.81	9.57	7.91	6.64	5.66	4.88
18	9.11	7.38	6.10	5.12	4.37	3.76
20	8.20	6.69	5.99	4.67	3.93	3.39
25	6.16	4.99	4.13	3.47	2.95	2.55



3/4x18" or 3/4x30"

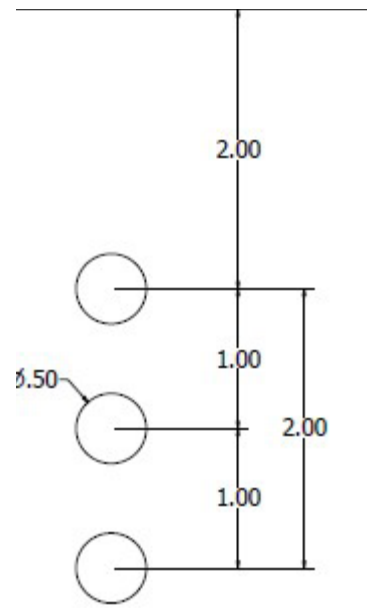
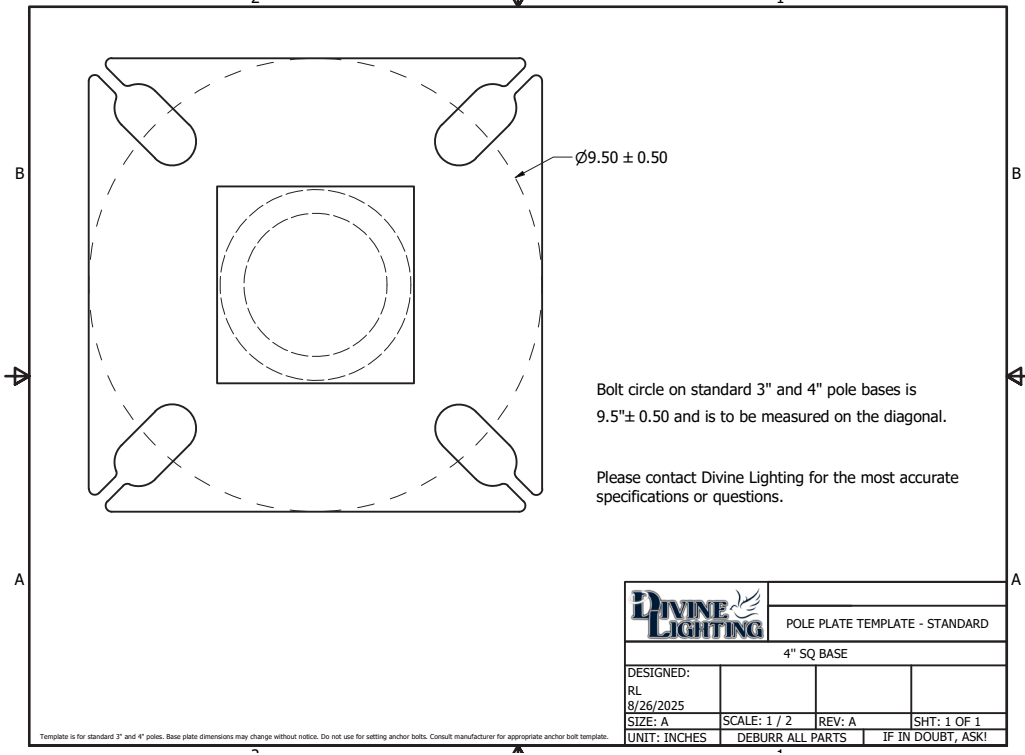
ORDERING GUIDE

MODEL	SHAFT	SCHEDULE/GAUGE	HEIGHT	OPTIONS	PRIMER	FINISH
Model POLE-RSP (Round Steel Anchor Plate)	Shaft 4.5 - 4.5" RD	Schedule/Gauge 7 - 7 Gauge 11 - 11 Gauge	Height 10' 12' 15' 20' 25' 30'	Options 190 - (1) 90 Degree Hole 2180 - (2) 180 Degree Holes GFCI - GFCI Receptacle GFCILOCK - GFCI Lock TENON 2 3/8 x 3 EYE - Eye Hooks FHH - Flush Hand Hole	Primer(Optional) P - Primer Coat (Recommended for Coastal Environments)	Finish DB - Dark Bronze BL - Black AS - Anodized Silver WH - White CC - Custom Color

**Customer is responsible for providing fully dimensioned drill patterns when using heads from other manufacturers; otherwise, the standard Divine Lighting drill pattern will be used.

**Customer must specify the orientation of fixtures on the pole when ordering. This information can be found in the options section, e.g. 190, 2180, etc.

**Divine Lighting is not responsible for inconsistencies between poles, fixtures, and parts produced by different manufacturers, and cannot guarantee proper fitting between such components.



Divine Standard Drill Pattern