

Standard Product Specifications

Pole Shaft:

Fabricated from domestic ASTM A500 Grade C steel tubing, minimum yield strength 50,000 psi.

Base Plate:

ASTM A36 structural steel with 36,000 psi minimum yield. Two piece base cover and hardware included.

Anchor Bolts:

(4) Galvanized steel per ASTM F1554 Grade 55 with (2) nuts and (2) washers per bolt.

Hand Hole:

3x5 in.(4sq+4rd+) or 2x4 (3rd) reinforced opening 12 in. above base; includes cover and stainless-steel screws.

Finish:

Durable powder coat with phosphate pre-treatment for corrosion resistance. Optional primer undercoat available for extended protection.

Warranty:

2 Year Structural Warranty
1-Year Limited Finish Warranty Standard;
3-Year Optional Warranty
(Extended warranty options apply to finish only).

Grounding:

Grounding hole provided inside hand hole.



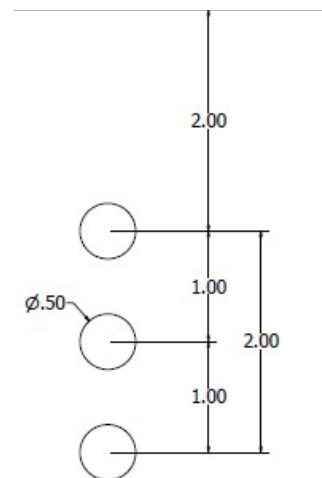
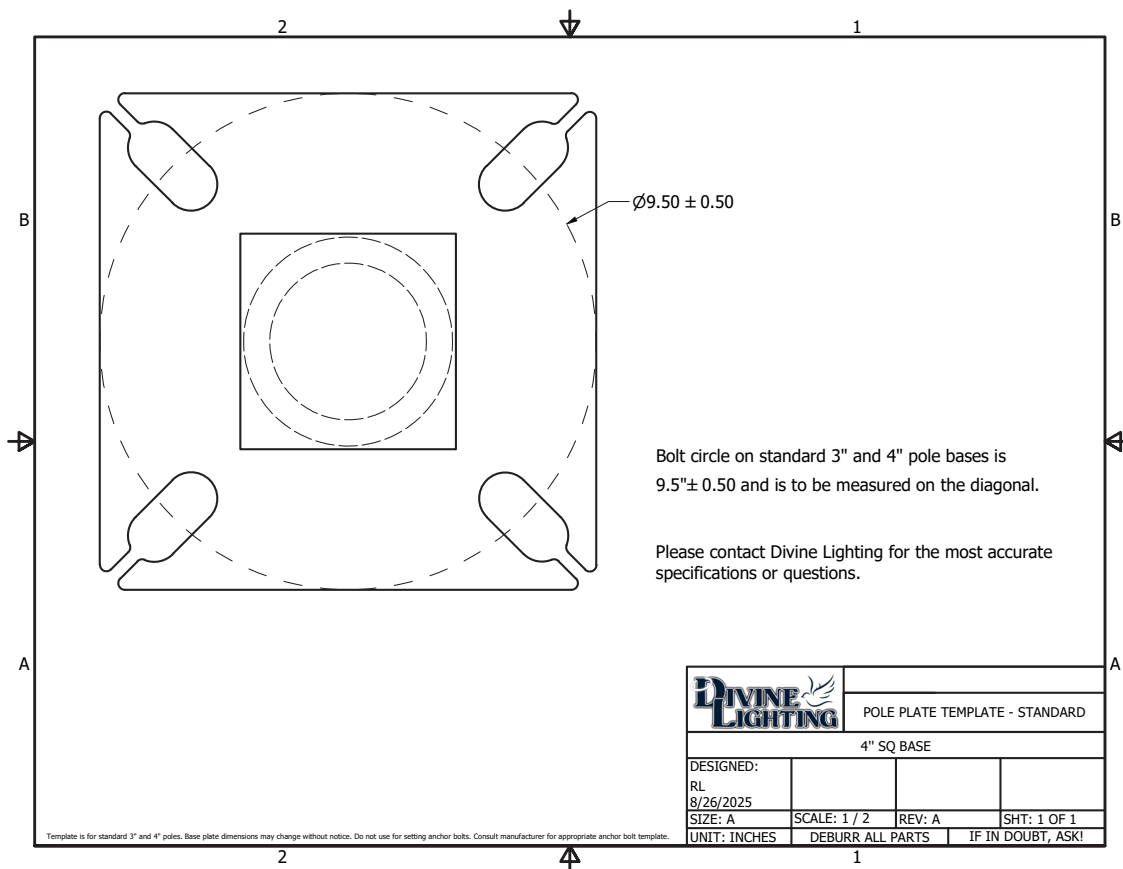
5/8x18" or 3/4x18"

MODEL	SHAFT	SCHEDULE/GAUGE	HEIGHT	OPTIONS	PRIMER	FINISH
Model POLE-RSP (Round Steel Anchor Plate)	Shaft 3 - 3" OD	Schedule/Gauge 7 - Schedule 7 11 - Schedule 11	Height 12' 14' 15' 16' 18' 20'	Options 190 - (1) 90 Degree Hole 2180 - (2) 180 Degree Holes GFCI - GFCI Receptacle GFCILOCK - GFCI Lock TENON 2 3/8 x 3 EYE - Eye Hooks DB1 - Decorative Base 1 FHH - Flush Hand Hole	Primer(Optional) P - Primer Coat (For Coastal Environments & Extended Warranty)	Finish DB - Dark Bronze BL - Black AS - Anodized Silver WH- White CC - Custom Color

**Customer is responsible for providing fully dimensioned drill patterns when using heads from other manufacturers; otherwise, the standard Divine Lighting drill pattern will be used.

**Customer must specify the orientation of fixtures on the pole when ordering. This information can be found in the options section, e.g. 190, 2180, etc.

**Divine Lighting is not responsible for inconsistencies between poles, fixtures, and parts produced by different manufacturers, and cannot guarantee proper fitting between such components.



Divine Standard Drill Pattern

EPA Chart 11ga.

Pole Height	90 MPH	100 MPH	110 MPH	120 MPH	130 MPH	140 MPH
8	9.44	7.64	6.32	5.31	4.52	3.90
10	7.55	6.11	5.05	4.25	3.62	3.12
12	6.29	5.10	4.21	3.54	3.01	2.60
15	5.03	4.08	3.37	2.83	2.41	2.08
20	3.5	2.4	1.6	.9	NA	NA

EPA Chart 7ga.

Pole Height	90 MPH	100 MPH	110 MPH	120 MPH	130 MPH	140 MPH
8	13.28	10.76	8.89	7.47	6.37	5.478
10	10.63	8.61	7.11	5.98	5.09	4.39
12	8.86	7.17	5.93	4.98	4.24	3.66
15	7.08	5.74	4.74	3.99	3.40	2.93
20	4.92	3.98	3.28	2	NA	NA

POLE ACCESSORIES
2-PC DECORATIVE BASES

Standard Product Specifications

Materials:
 Aluminum
Finish:
 Powder Coated
Listing:
 Wet List to Meet UL 1598 Standard

MODEL	FINISH
Model DB1 - 3" Pole DB2 - 4" Pole DB3-4 - 4" Pole DB3-5 - 5" Pole DB4 - 4" Pole	Finish DB - Dark Bronze BL - Black AS - Anodized Silver WH- White CC - Custom Color



DB1
 24"H x 14"W
 Fits 3" Pole



DB2
 22"H x 15"W
 Fits 4" Pole



DB3
 27"H x 17"W
 Fits 4" or 5" Pole



DB4
 24"H x 12"W
 Fits 4" Pole