

**Decorative Multi-Purpose Luminaire
Architectural Indoor Lighting Solution**

PERFORMANCE

Delivered Lumens:
2,200 – 9,200 lumens (depending on configuration)

Wattage:
20W – 80W LED System

Efficacy:
Up to 115 lm/W

LED Lumen Maintenance:
Estimated 100,000 hours based on IES LM-80 results and TM-21 calculations.

Typical Application Life:
Projected LED life exceeds 100,000 hours under 25°C ambient operating conditions.

Color Characteristics:
CCT: 2700K / 3000K / 3500K / 4000K / 5000K
(CCT Selectable w/ Switch)

CRI:
80 or 90 CRI Available

Distribution:
3 Indirect/Direct Light Distribution Types
(Field Switch Adjustable)

Thermal Management:
Incorporates cutting-edge thermal and electric separation to enhance heat dissipation and boost product performance.

*Actual performance may differ as a result of end-user environment and application. All values are design or typical values, measured under laboratory conditions at 25°(±5°).

ELECTRICAL

Input Voltage:
120/277V

Dimming:
0-10V Dimming Driver with 0-100% Dimming Range

Driver:
Programmable Class II LED Driver
Power Factor >0.90
Total Harmonic Distortion (THD) <20%

LEDs:
High-efficiency LEDs mounted to metal-core circuit boards for optimized thermal management.



CONSTRUCTION

Housing:
Extruded Recycled Aluminum Housing with Diffuser and Encaps to eliminate gaps and LED visibility.
*All aluminum components are manufactured from corrosion-resistant alloys suitable for outdoor architectural environments.

Finish:
Corrosion-resistant Super Durable Powder Coat Finish

Optics:
Flat, Frosted Lens

LED Source:
Integrated LED Array

INSTALLATION

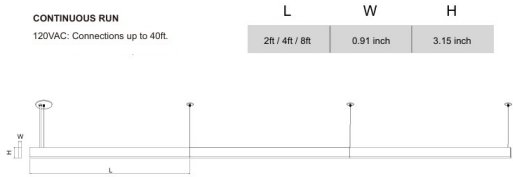
Installation by qualified electrician.
Dry Wall Pendant, Drop-Style Pendant, and Wall Mounts Available.
Fixtures Connectable for a total of 40 Ft.

LISTINGS

UL Listed for Damp Locations.
Conforms to UL 1598 and CSA standards.

WARRANTY

Standard 2-Year Limited Warranty
Optional 5-Year and 7-Year Extended Warranties Available
Rated for -20°C to 40°C ambient operating temperature.
Note: Specifications subject to change without notice. Actual performance may vary depending on installation environment and operating conditions.



SPECIFICATIONS

LMCN - 0.9"W x 3.15"H x 2' / 4' / 8'L

See Page 2 For In-Detail Fixture Options

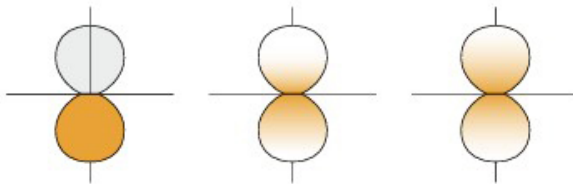
ORDERING GUIDE

MODEL	LENGTH	FINISH	PERFORMANCE	KELVIN	MOUNT	OPTIONS
Model LMCN	Length 2' - 2 Foot 4' - 4 Foot 8' - 8 Foot	Finish BL - Black WH - White SG - Silver Gray Other Finishes Available, But May Incur Additional Charge	Performance (2" Fixture) LED20 - 20W LED 2000 Lms LED40 - 40W LED 4000 Lms LED80 - 80W LED 8000 Lms Performance (4" Fixture) LED25 - 25W LED 2500 Lms LED50 - 50W LED 5000 Lms LED100 - 100W LED 10000 Lms *Wattage is Power Adjustable - 100% / 75% / 50%	Kelvin CCT - CCT Selectable 2700K - 5000K	Mount DWP - Dry Wall Pendant Mount DCP - Drop Ceiling Pendant Mount WM - Wall Mount Specify Length of Pendant In Inches	Options 5Y - 5 Year Warranty 7Y - 7 Year Warranty MOT - Motion Sensor EM - Emergency Battery Backup CRI80 CRI90

CCT/Distribution Options

- CCT-SELECTABLE TECHNOLOGY
Five Field-Selectable CCTs: 2700K, 3000K, 3500K, 4000K, 5000K.

- DISTRIBUTION-SELECTABLE TECHNOLOGY
Three Field-Selectable Light Distribution Types:

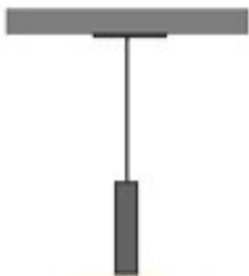


Down 100%

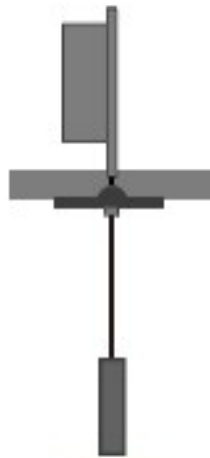
Up 30% Down 70%

Up 50% Down 50%

Mounting Options



Dry Wall Pendant



Drop Ceiling Pendant



Wall Mount