

# AREA & SITE LIGHTING

## BKT10

### Standard Product Specifications

**Materials:**

Aluminum

**Finish:**

Powder Coated

**Lens:**

Polycarbonate Optics

**LED:**

Integrated LED Array

**Listing:**

Wet List to Meet UL 1598 Standard

**Driver Info:**

120/277V

**Installation Information:**

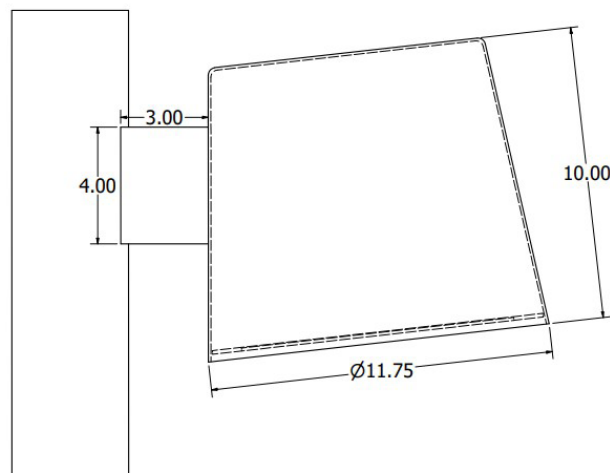
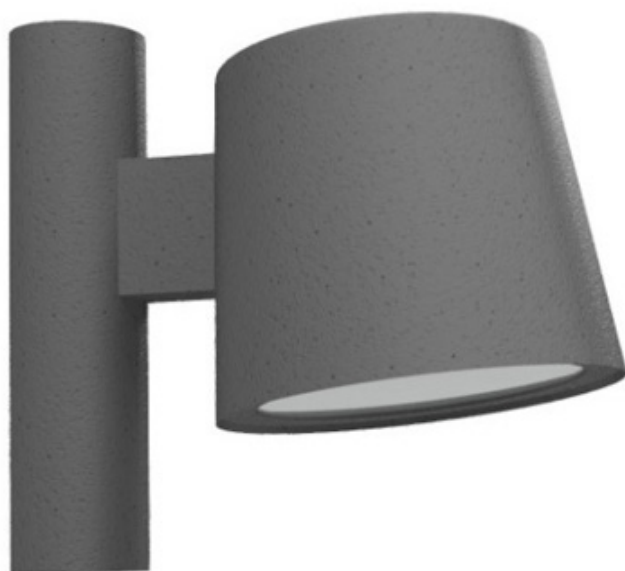
Install by Qualified Electrician

**Warranty:**

2 Years From Date of Shipment

**DIMENSIONS:**

See Below Drawing



MODEL	FINISH	WATTAGE	KELVIN	TYPE	OPTIONS
<b>Model</b> BKT10	<b>Finish</b> DB - Dark Bronze BL - Black AS - Anodized Silver WH- White CC - Custom Color	<b>Wattage</b> LED10 - 10W LED 1000 Lms LED15 - 12W LED 1500 Lms LED20 - 15W LED 2000 Lms LED30 - 20W LED 3000 Lms LED40 - 25W LED 4000 Lms	<b>Kelvin</b> 30 - 30K 40 - 40K	<b>Type</b> II - Type II IIM - Type II Medium III - Type III IIIM - Type III Medium IV - Type IV V - Type V VSQ - Type V Square SPOT - Spotlight	<b>Options</b> PC - Photocell DIM - 0-10V Dimmable