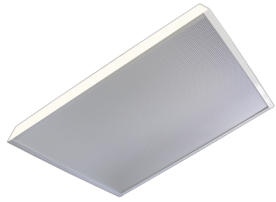


# LINEAR MODULAR SERIES



### DIMENSIONS:

- 2424M - 24" Sq. x 3.25"E
- 4812M - 48"L x 12"W x 3.25"E
- 4816M - 48"L x 16"W x 3.25"E
- 4824M - 48"L x 24"W x 3.25E

Project:	
Location(s):	
Type:	
Qty:	
Date:	

## PRODUCT SPECIFICATIONS

### Description:

A Modular Linear Fixture with a Choice of Different Lenses

### Materials:

20Ga. G90 Galvanized Steel

### Finish:

Powder Coated

### Lens:

Clear Acrylic

### LED:

Integrated LED Array

### Listing:

Damp List to Meet UL1598 Standard

### Driver Info:

120V

### Installation Information:

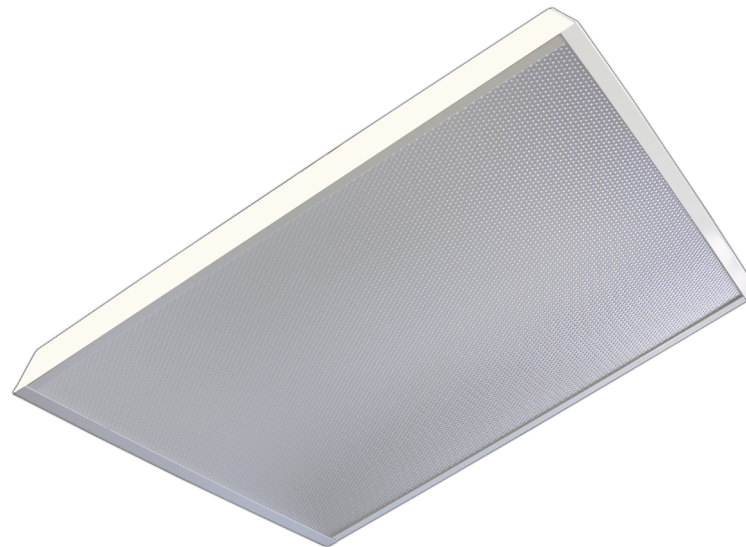
Install by Qualified Electrician

### Warranty:

2 Years From Date of Shipment



ADA Compliant



## ORDER INFORMATION

Call Factory For Fluorescent Options

MODEL	FINISH	WATTAGE	KELVIN	LENS	OPTIONS
<b>Model</b> 2424M 4812M 4816M 4824M	<b>Finish</b> WH - White	<b>Wattage (2424, 4812, 4816)</b> LED36 - 36W LED 3600Lms LED64 - 64W LED 6400Lms  <b>Wattage (4824)</b> LED64 - 64W LED 6400 Lms LED128 - 128W LED 12800Lms	<b>Kelvin</b> 30 - 30K 35 - 35K 40 - 40K	<b>Lens</b> CA - Clear Acrylic WA - White Acrylic SEC - 1/2: Silver Egg Crate DD - Drop Dish	<b>Options</b> MOT - Motion Sensor EM5 - 500 Lms Emergency EM12 - 1200 Lms Emergency DV - 120/277 Dual Volt

Divine Lighting & Mfg., LLC.  
3704 Hilltop Dr. Ste. 200

<http://www.divinelighting.net>  
[customerservice@divinelighting.net](mailto:customerservice@divinelighting.net)

PH: 936-494-3900  
FX: 936-494-3910

As led performance and lumen output becomes more efficient, specifications are subject to change without notice