

# WALLPACK INVUE



**DIMENSIONS:**  
19.5"W x 11.5"H x 18.5"E

Project:	
Location(s):	
Type:	
Qty:	
Date:	

## PRODUCT SPECIFICATIONS

**Description:**

Large Rounded Wallpack with  
Decorative Grilled Top Pattern

**Materials:**

Die Cast Aluminum

**Finish:**

Powder Coated

**Lens:**

Clear Polycarbonate

**LED:**

Integrated LED Array

**Listing:**

Wet List to Meet UL 1598 Standard

**Driver Info:**

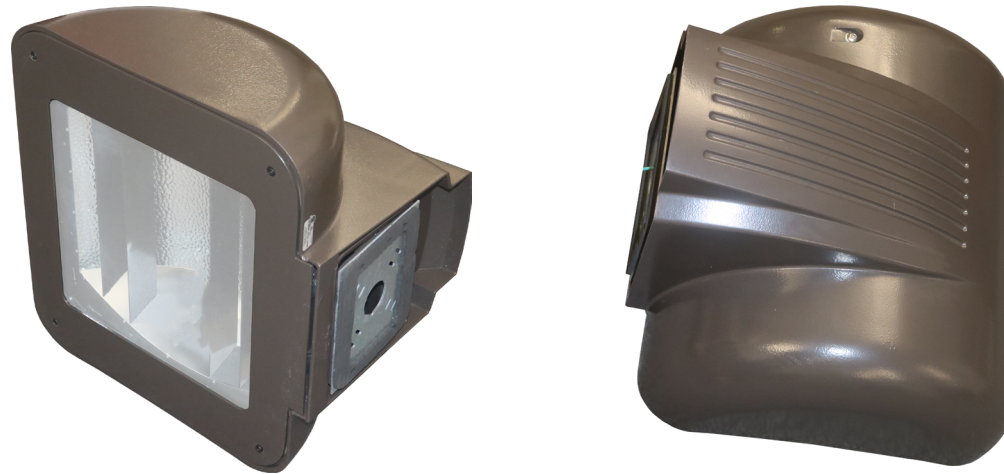
120/277V

**Installation Information:**

Install by Qualified Electrician

**Warranty:**

2 Years From Date of Shipment



## ORDER INFORMATION

Call Factory For Fluorescent Options

MODEL	FINISH	WATTAGE	KELVIN	OPTIONS
<b>Model</b> INVUE	<b>Finish</b> DB - Dark Bronze BL - Black AS - Anodized Silver WH- White CC - Custom Color	<b>Wattage</b> LED50 - 50W LED 5600 Lms LED65 - 65W LED 6500 Lms LED90 - 90W LED 11,000 Lms	<b>Kelvin</b> 30 - 30K 35 - 35K 40 - 40K 50 - 50K	<b>Options</b> DIM0-10V - 0-10V Dimmable EM5 - 500 Lm Emergency Backup EM12 - 1200 Lm Emergency Backup