

DNC SERIES



DIMENSIONS:

- DNC37 - 3"D x 7"L
- DNC47 - 4.5"D x 7"L
- DNC48 - 4"D x 7"L
- DNC512 - 5"Dia x 12"L
- DNC67 - 6"D x 7"L
- DNC69 - 6"D x 9"L
- DNC610 - 6"D x 10"L
- DNC612 - 6"D x 12"L
- DNC615 - 6"D x 15"L
- DNC812 - 8"D x 12"L
- DNC814 - 8"D x 14"L
- DNC818 - 8"D x 18"L
- DNC1015 - 10"D x 15"L

Project:	
Location(s):	
Type:	
Qty:	
Date:	

PRODUCT SPECIFICATIONS

Description:
Aluminum Cylinder Downlight with Different Mounting Options

Materials:
Aluminum Housing

Finish:
Powder Coated

Lens:
Included in Options

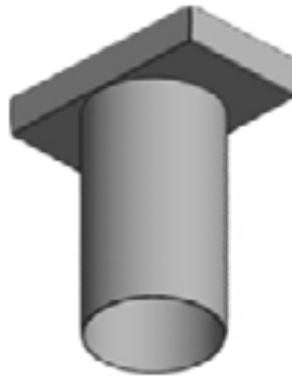
LED:
Integrated LED Array

Listing:
Damp List to Meet UL1598 Standard

Driver Info:
120V

Installation Information:
Install by Qualified Electrician

Warranty:
2 Years From Date of Shipment



Shown w/ EM Back Box required in fixtures under 15"L



Shown w/ Black Baffle Option



Pendant Mount

ORDER INFORMATION
Call Factory For Fluorescent Options

MODEL		FINISH	WATTAGE	KELVIN	OPTIONS
Model DNC37 DNC47 DNC48 DNC56 DNC58 DNC59 DNC512 DNC67	DNC69 DNC610 DNC612 DNC615 DNC812 DNC814 DNC818 DNC1015	Finish DB - Dark Bronze BL - Black AS - Anodized Silver WH - White CC - Custom Color	Wattage LED5 - 5W LED 500 Lms LED10 - 10W LED 1000 Lms LED15 - 15W LED 1500 Lms LED20 - 20W LED 2000 Lms Wattage (512) LED30 - 30W LED 2600 Lms Wattage (DNC812,814,818) LED25 - 25W LED 2500 Lms LED30 - 30W LED 3000 Lms Wattage (DNC1015) LED45 - 45W LED 4500 Lms LED55 - 55W LED 5500 Lms	Kelvin 30 - 30K 40 - 40K 50 - 50K	Options DV - 120/277V - Dual Volt EM - Emergency Battery Backup (back box required for fixtures under 15"L) PC - Photocell CMXX - Cord Mount* PMXX - Pendant Mount* replace xx with pendant/cord length BLB - Black Baffle(Required for 8" DNC) WHB - White Baffle REF - Specular Reflector(Required for 8" DNC) LB - Lens Bottom (Wet Listed)