

**CEILING FLUSH**

**OS12**



**DIMENSIONS:**  
12" Sq. x 4.5"D

Project:	
Location(s):	
Type:	
Qty:	
Date:	

**PRODUCT SPECIFICATIONS**

**Description:**  
A Square Polycarbonate Ceiling Flush Fixture

**Materials:**  
20ga. G90 Galvanized Steel Pan

**Finish:**  
Powder Coated

**Lens:**  
White Polycarbonate

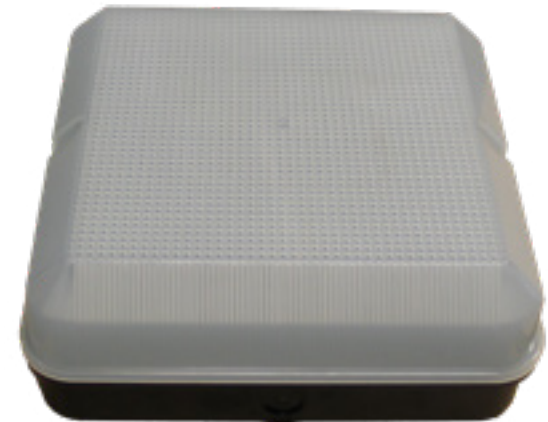
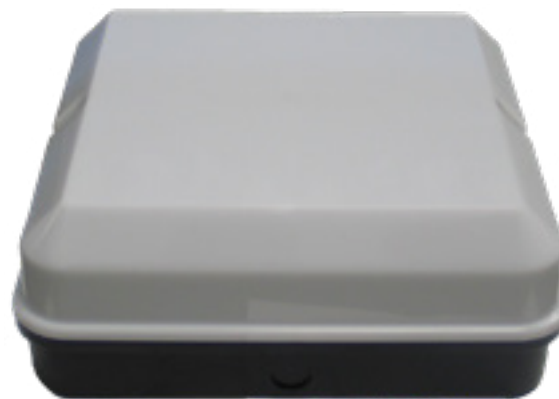
**LED:**  
Integrated LED Array

**Listing:**  
Wet List to Meet UL1598 Standard

**Driver Info:**  
120V

**Installation Information:**  
Install by Qualified Electrician

**Warranty:**  
2 Years From Date of Shipment



**ORDER INFORMATION**  
Call Factory For Fluorescent Options

MODEL	FINISH	WATTAGE	KELVIN	LENS	OPTIONS
<b>Model</b> OS12	<b>Finish</b> WH - White DB - Dark Bronze BL - Black AS - Anodized Silver CC - Custom Color	<b>Wattage</b> LED16 - 16W LED 1600Lms LED20 - 20W LED 2000Lms	<b>Kelvin</b> 30 - 30K 40 - 40K	<b>Lens</b> WP - White Polycarbonate CP - Clear Polycarbonate FP - Frosted Polycarbonate	<b>Options</b> DV - 120/277V